



COMPANY PROFILE

PT Investasi Hijau Selaras (HIJAU)

Green Technology Without Worry

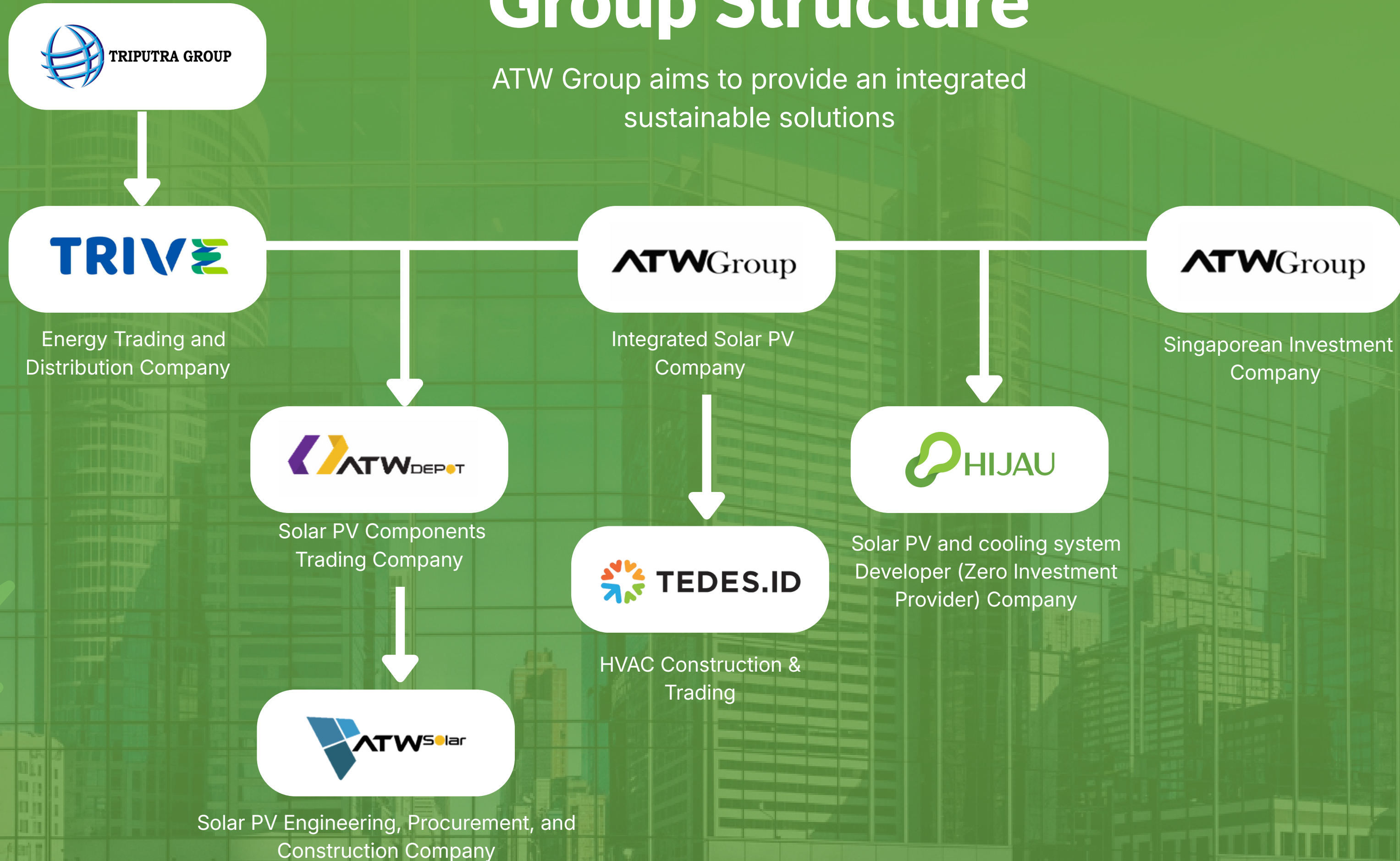
 ISO 9001:2015 | ISO 4500:2018

www.hijau.co.id



Group Structure

ATW Group aims to provide an integrated sustainable solutions



Company Milestone

HIJAU envisions energy independence for everyone by the power of the sun.

Setting Up (2017)



1. ATW Group officially launched its business.
2. Secured a distributorship for REC*.
3. Formed partnerships with SMK Ma'arif (Djarum Foundation), Politeknik Jember, and Prasetya Mulya University

Partnership (2019-2020)



1. ATW Group entered the EPC market under ATW Solar
2. Market growth surged following regulatory improvements (MoEMR 13/2019)
3. Established a JV partnership with Shizen Energy, a global developer.
4. HIJAU was designated as the local co-developer.

Launched full-fledged operations with a 15 MWp installation under the JV

First Operation (2023)



Company Milestone

Moving forward, HIJAU intend to take part in developing sustainable infrastructure through Cooling-as-a-Service business

- 1. HIJAU secured its initial round of funding from SEACEF II
- 2. The company has 4.3 MWp in operation, 12 MWp in development, and a 185.4 MWp pipeline under its independent management.

Engaged in funding partnerships within the rental business with prominent industry players, Launched Cooling-as-a-Service product.

Intends to achieve 70 MWp of solar photovoltaic capacity installation, secured debt funding from SMI and expansion of business lines, including the pilot operation of CaaS



Seed Capital
(2024)

Continue Expanding
(2025)



Target
(2025)



ATW Group by Numbers



+186 MWp

Solar PV Capacity Installed



213,534 tonnes

CO2 emissions reduced annually



485,306 pcs

Trees Planted Equivalence

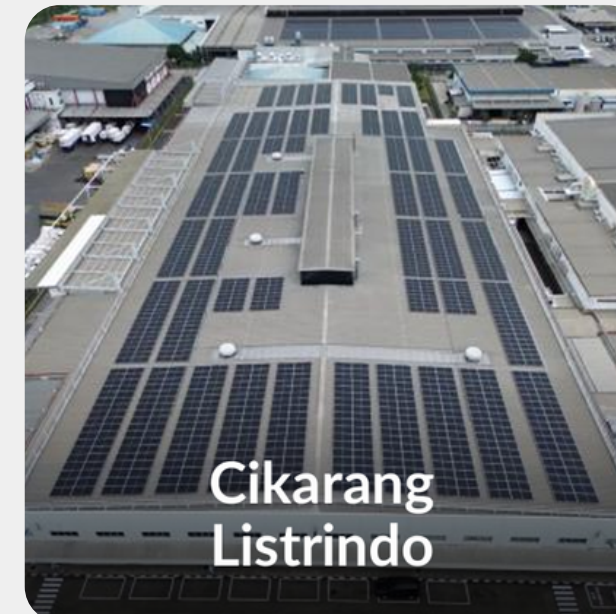


ATW Group Industrial Estate Case



Riau Prima Energi PT CJ

Pulp & paper leader with private coal + PV + battery mix. ATW Solar delivered 6 projects, 59 MWp, among the largest industrial solar portfolios.



Cikarang Listrindo

IPP serving major estates with premium electricity. ATW Solar built 42 projects, 23 MWp, integrating solar for tenant-heavy clusters.



Bekasi Power

IPP of Jababeka industrial estate. HIJAU installed 2 projects, 1 MWp, under a proven lease-to-lease model



Tatajabar Sejahtera

Part of Salim Group. ATW Solar delivered a 1.6 MWp project, marking early solar adoption in the group's estate.

Total 84.5 MWp Solar PV in Industrial Estates

HIJAU Provides *Green Technology Without Worry*

HIJAU offers reliable solar panel systems for commercial-industrial use, with priority for



Safety



Engineering



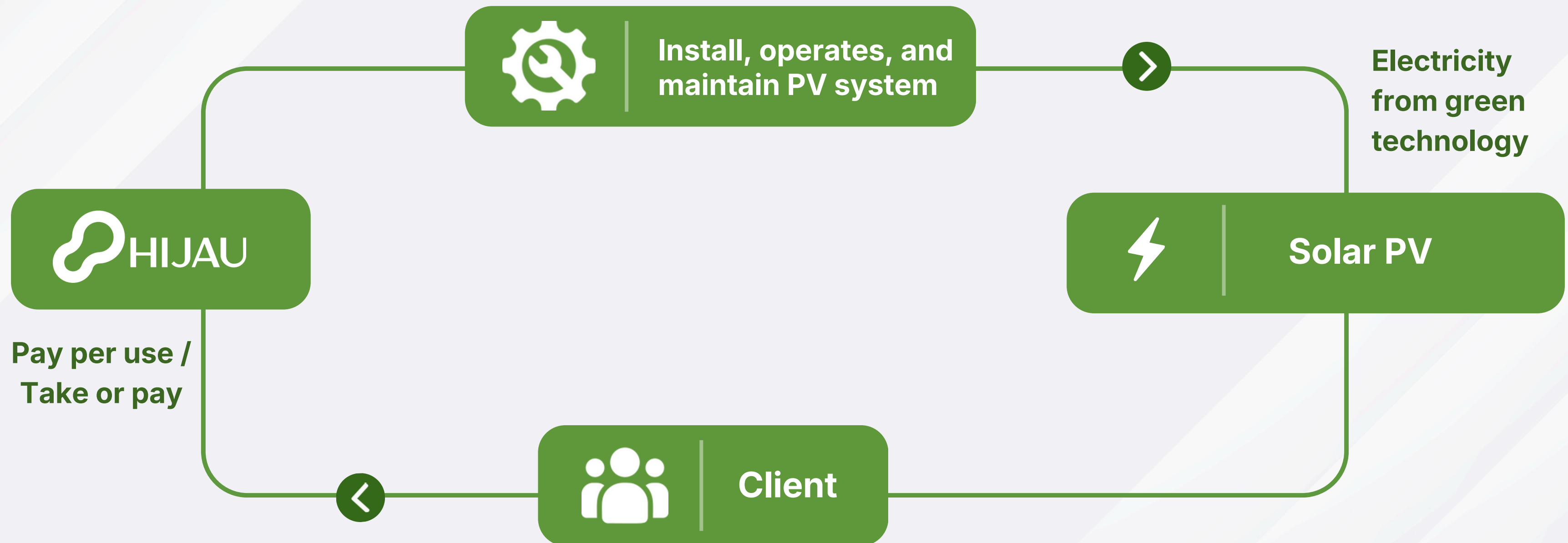
Service

with *zero investment* scheme.



How HIJAU Works :

Compte Solution With Zero Investment



Service Process :

Our Service Process: Efficient and Transparent



Solar as a Service Case Study



PT CJ Feed & Care

Sector : Livestock Feed

Overview :

Rooftop solar installations across 4 factories in Lampung, Serang, Semarang, and Jombang to reduce carbon emission and achieved savings.

Challenges :

Dusty conditions from livestock machinery emissions required systems designed for durability and consistent performance.

Solutions :

Integrated real-time monitoring systems to ensure optimal performance and minimize the impact of dust accumulation.

Total 3,490 kWp Solar PV

Solar as a Service Case Study



PT HLI Green Power

Sector : EV Battery

Overview :

Solar installations for Korean Global EV Battery Factory with over 7 MWp Solar PV capacity including existing canopy.

Challenges :

Adheres to strict HSE standards and operate machines that are highly sensitive to electrical quality and require uninterrupted power supply.

Solutions :

HSE compliance is strictly monitored throughout the execution and the interconnection process is done under 4 hours.



7,144 kWp Solar PV

Solar as a Service Portfolio



Client List for Zero Investment scheme

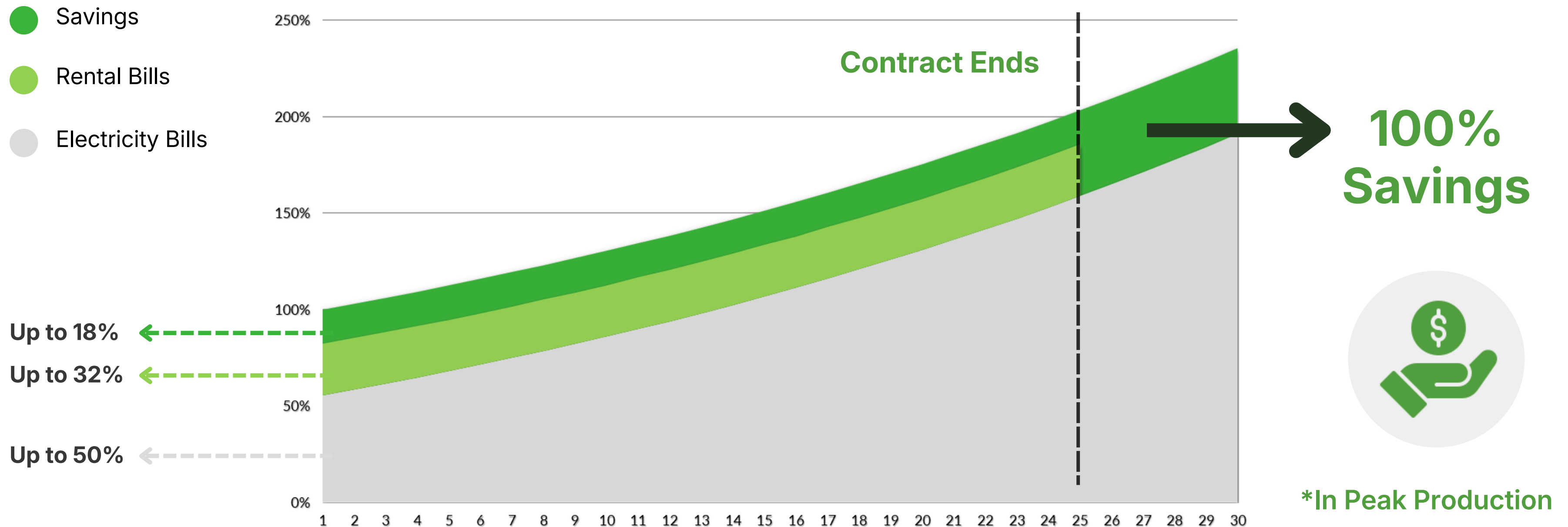
No	Project Code	Size (MWp)	Size (MWAC)	Signing Month
1	Cheil Jedang Lampung	0.772	0.740	Sep-23
2	Cheil Jedang Serang	0.977	0.575	Sep-23
3	Cheil Jedang Semarang	0.979	0.740	Sep-23
4	Cheil Jedang Jombang	0.770	0.575	Sep-23
5	Lippo Mall Cikarang Phase 1	0.766	0.550	Jan-24
6	Dharma Polimetal	3.651	2.795	Mar-24
7	SKMS	1.587	1.265	May-24
8	Wijaya Triutama	0.684	0.515	Jun-24
9	Lippo Mall Batu	0.372	0.280	Jul-24
10	Lippo Mall Cikarang Phase 2	0.302	0.230	Jul-24
11	Lippo Mall Kramat Jati	0.458	0.345	Jul-24
12	Wintai	0.775	0.575	Sep-24
13	Pako Phase 2	0.536	0.395	Oct-24
14	Inkoasku Phase 2	0.369	0.165	Oct-24

No	Project Code	Size (MWp)	Size (MWAC)	Signing Month
15	Combiphar Padalarang	0.602	0.460	Nov-24
16	DCI	0.154	0.115	Nov-24
17	Mitra Saruta Indonesia	3.001	2.250	Nov-24
18	Hyundai LG Indonesia	7.144	5.400	Nov-24
19	Alkindo Naratama (Papertube)	0.422	0.315	Dec-24
20	Alfa Polimer Indonesia	0.308	0.230	Dec-24
21	Alkindo Naratama (HPC)	0.446	0.345	Dec-24
22	Ecopaper Phase 2	1.914	1.450	Dec-24
23	Inkasa	1.972	1.472	Mar-25
24	Pei Hai	1.52	1.13	May-25
25	Hanyoung	0.595	0.444	Jun-25
26	APL Surabaya	0.2	0.150	Agt-25
27	Satoria	3.266	3.150	Sept-25
28	SOHO Industri Pharmasi Phase 2	0.089	0.260	Sept-25
29	Parit Padang Global Phase 2	0.256	0.200	Sept-25
30	Niaga Plastik	0.765	0.550	Sept-25
Total		35.23	27.666	

Financial Excellence :

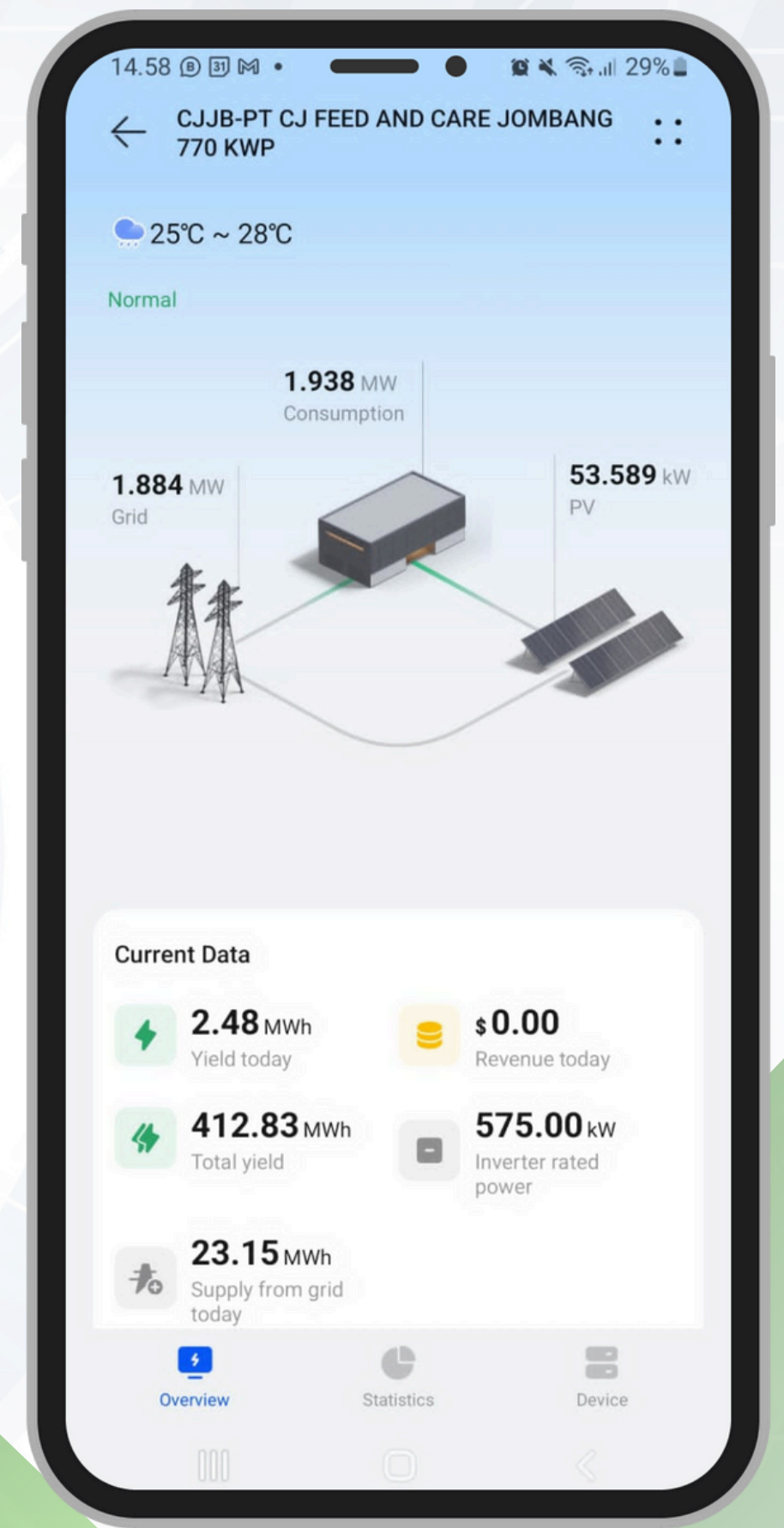
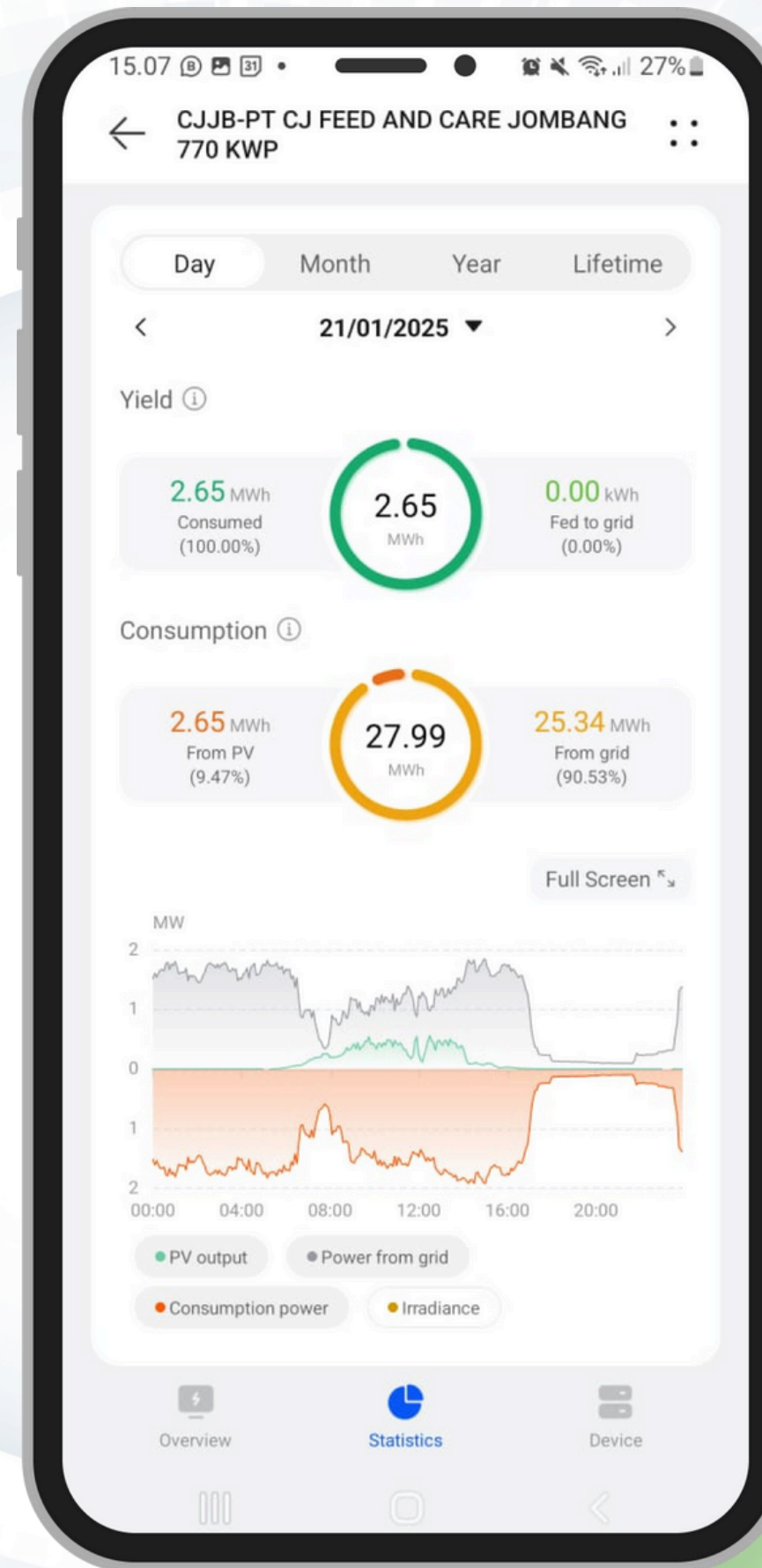


100% Savings After Contract : Maximize Your Energy ROI





We ensure precise and real-time data on energy yield, carbon reduction, and alarms. This monitoring can be accessed from **website and mobile app**



Engineering Excellence :



International Standards, Expertise, and Certifications

With over 35 MWp of photovoltaic installations and engineers **with 10+ years of PV experience**, and backed by **professional certifications**, our team ensures the highest standards in every project.



Engineering

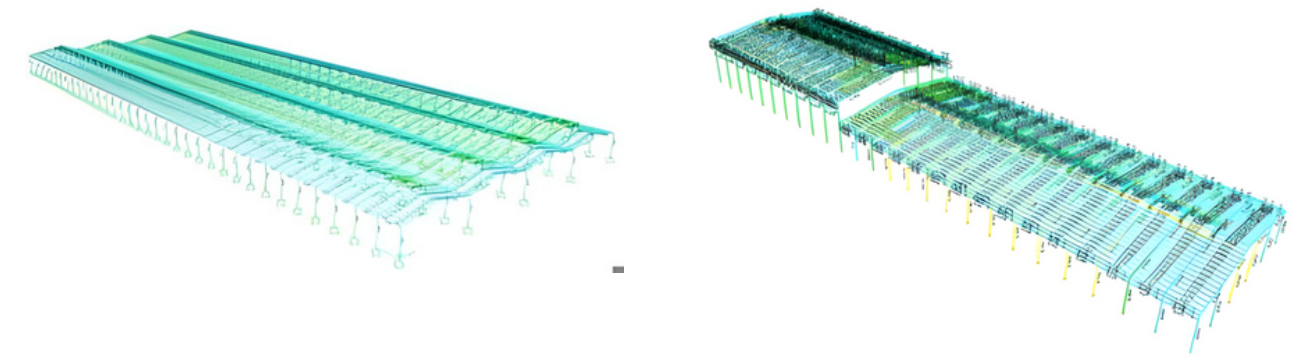
Design Excellence

Tailored design based on site condition that also make sure that the system is reliable



Structural Integrity Assessment

We ensure our clients' structures are robust enough to support the solar PV system by conducting thorough simulations and evaluations.



Safety Excellence :

Minimizing Risks in Installation & Maintenance

Our system **adheres to HSE and compliance standards to minimize incidents and client asset damage** during both installation and operational maintenance.



Safety



Double Protection System

Double breaker protection system before interconnecting the PV system to the client's system.



HDG Walkway

Ensures all PV panels are accessible through a durable, anti-corrosive walkway, eliminating the need to step directly on the roof, which reduces the risk of leakage.



Long Safety Line

We are using long safety lines on each roof that installed PV to prevent people from falling while maintenance

Service Excellence :

Ensuring Protection for All Stakeholders

We prioritize the security and satisfaction of all stakeholders by ensuring these points :



Service



Performance Guarantee

We stand by the performance of our solar PV systems, guaranteeing their reliability. If our systems fall short of the promised performance, we take full responsibility, even compensating our clients if necessary.



Insurance

We are safeguarding all of our solar PV assets with an all-risk insurance, ensuring reliability and peace of mind for all stakeholders.

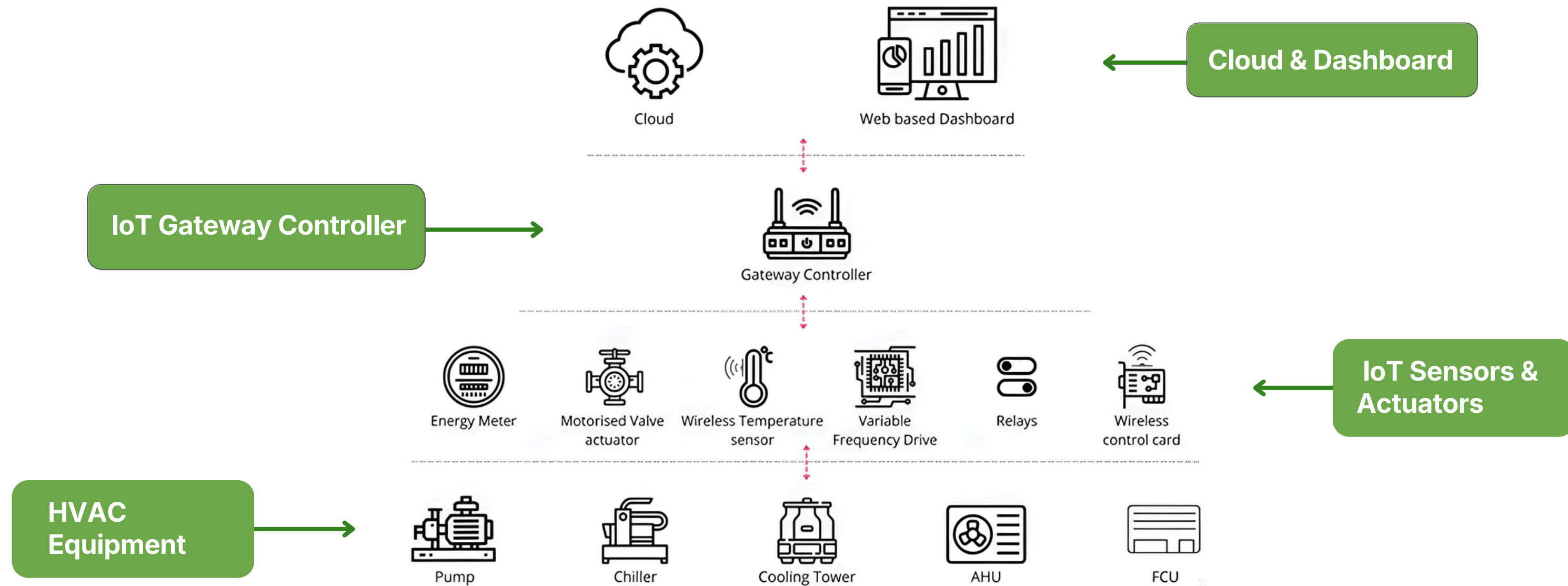


Government Compliance

Our system is designed to ensuring compliance at every stage. By strictly following these regulations, we minimize risks, protect all stakeholder assets, and maintain operational reliability.

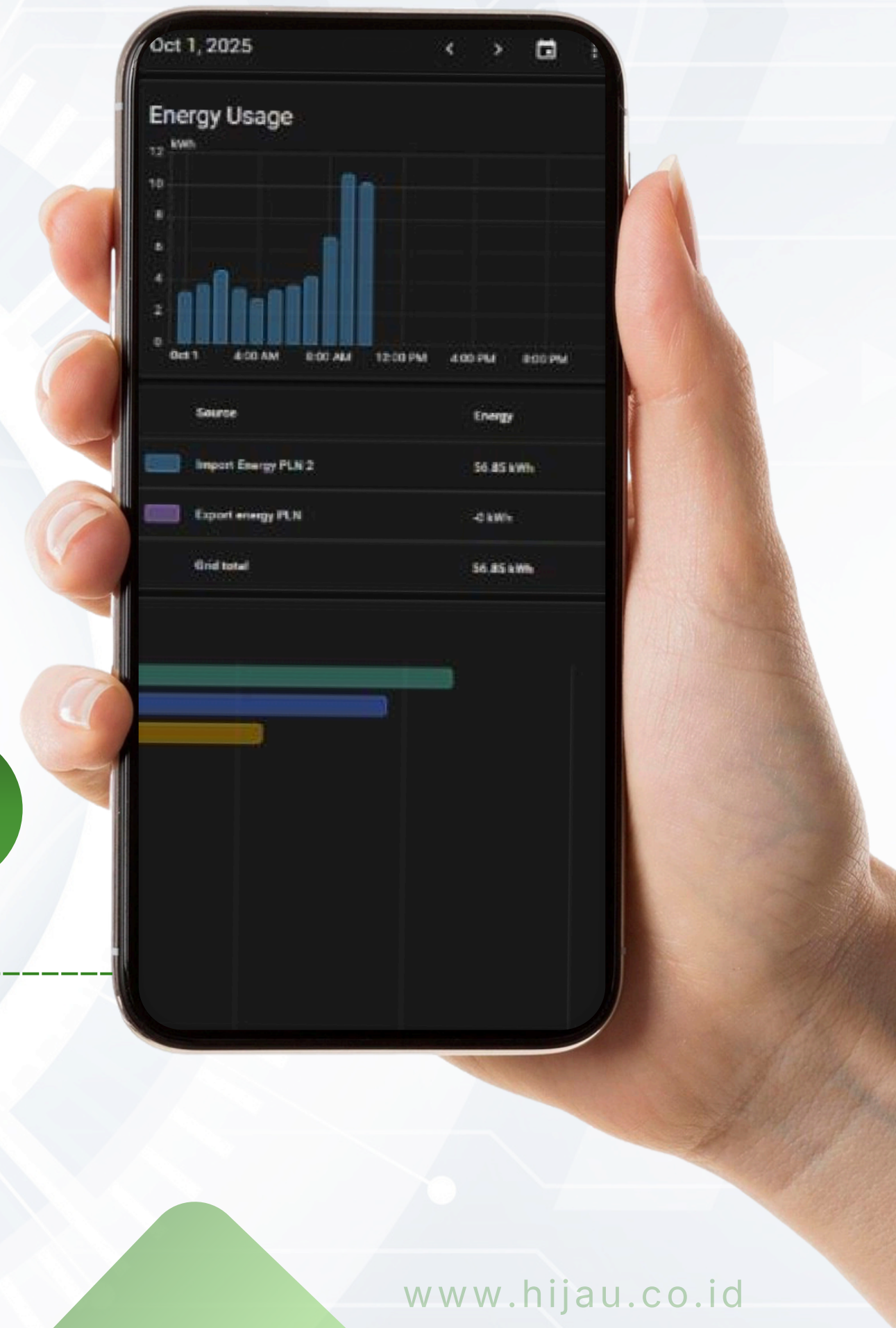
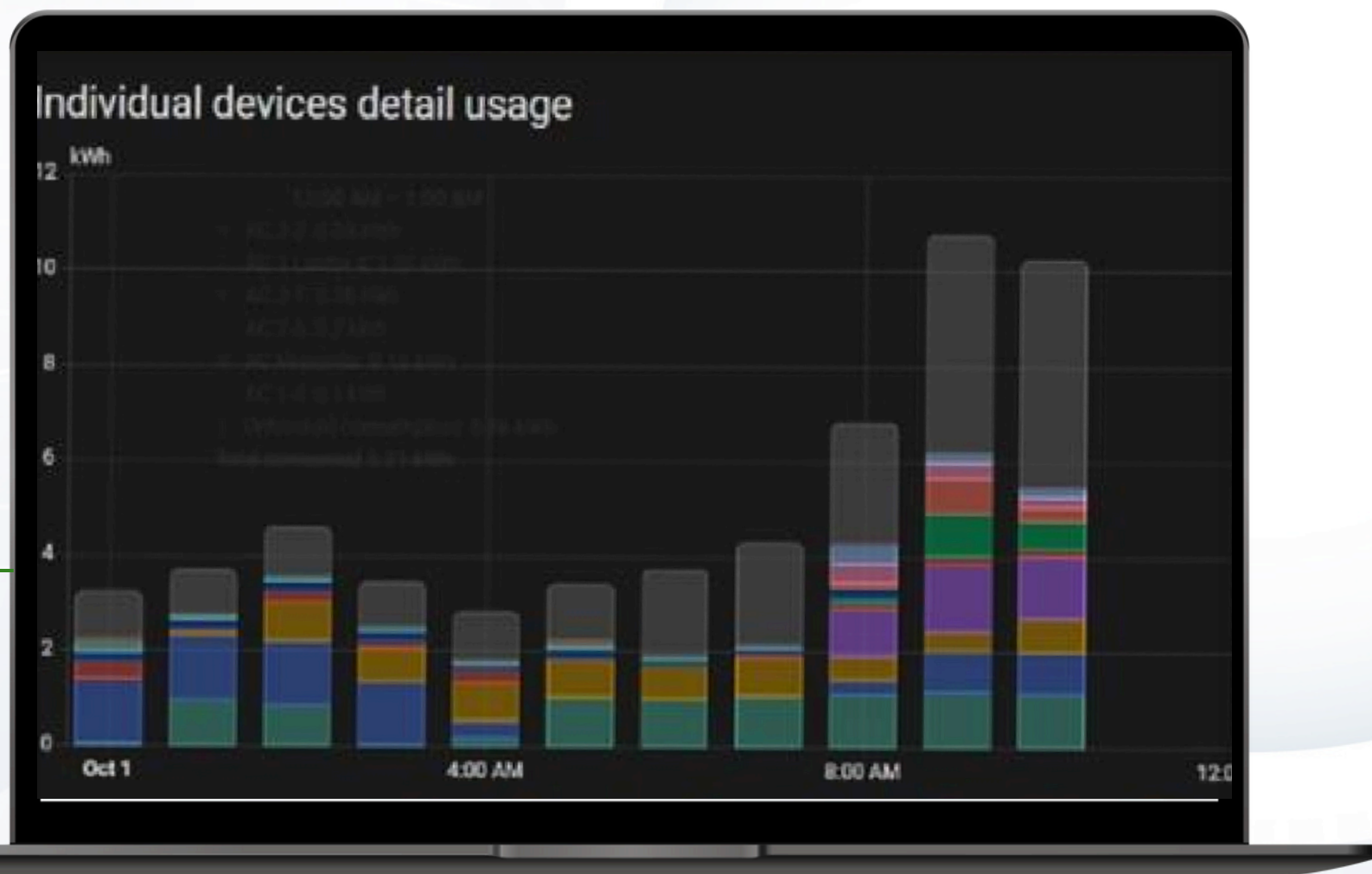
IoT-integrated system

An AI-driven IoT monitoring system will be implemented for real-time performance tracking, predictive maintenance, and intelligent optimization.



Smart sensors collect and transmit data to a cloud-based platform, where AI continuously **analyzes system performance, predicts potential failures, and detects anomalies** before disruptions occur. This **AI-integrated IoT** system improves operational efficiency, extends equipment lifespan, and reduces energy consumption.

We ensure precise and **real-time** data on temperature, flow, and energy usage. This monitoring can be accessed from your **website and mobile app**





Antonius Weno | **Founder/President Commissioner**

More than 25 years experience in business operations, financial management, and risk management across various industries, including banking and real sectors. Held positions as President Commissioner of PT Buana Finance Tbk, VP Business Development of Mizuho Bank, Director of Astra Sedaya Finance, Director of Atlas Resources, and CEO of Yarra Group.

Universitas Wijayakusuma, BSc in Economics



John Colombo | **Country Manager, Clime Capital Management**

More than 14 years of professional experience in the fields of renewable energy and mobility sectors. Held positions as Country Director for Asia Power Development Platform (APDP) and Head of Public Policy and Government Affairs for Uber.

University of Minnesota, BSc in Economics



Victor Samuel | President Director

More than 10 years experience in business development and sales leadership in the solar PV industry, securing major deals and leading operations across various markets. Demonstrated success in securing significant deals, driving technical and commercial negotiations, and leading strategic partnerships with global companies. Held positions as Country Director for Indonesia and Vietnam, REC Singapore

KTH Stockholm, TU Eindhoven, MSc in Sustainable Energy; ITB, BSc in Engineering Physics



Thio Ariyanto | Operational Director

More than 8 years experience in solar sales, engineering, and project management. Proven experience in leading large-scale projects, feasibility studies, and asset management. Held position as senior sales and project manager in Syntek Solar.

TU Delft, MSc in Sustainable Energy; ITB, BSc in Engineering Physics

Contact Us



+62 811 1006 6980



PT Investasi Hijau Selaras



marketing@hijau.co.id



www.hijau.co.id





Thank You

www.hijau.co.id

